

Situated on the northern boundary of the Millennium Green, the site offers the immediate benefit of the Millennium Green open space and its surrounding rural views.

Existing connectivity with road access via Harford Way plus additional pedestrian and cycle access through the Millennium Green and is close to main bus stops on Blake Hill Rd.

A previously 'built on' site (agricultural buildings), so little environmental or ecological impact compared to a new 'green-field' site.

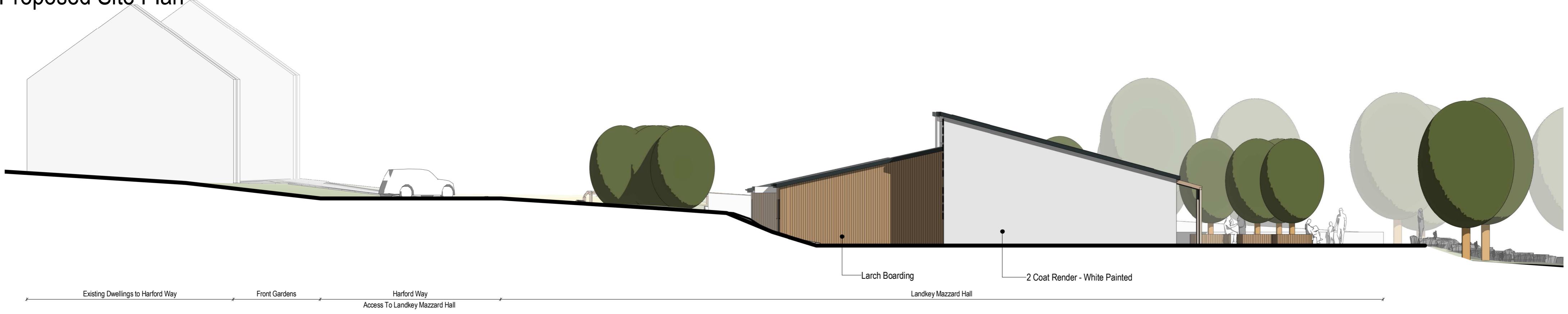
The site is able to accommodate a good amount of on-site parking.

Close proximity to other communal assets such as the MUGA games area, The Millennium Green and The Allotments sites.

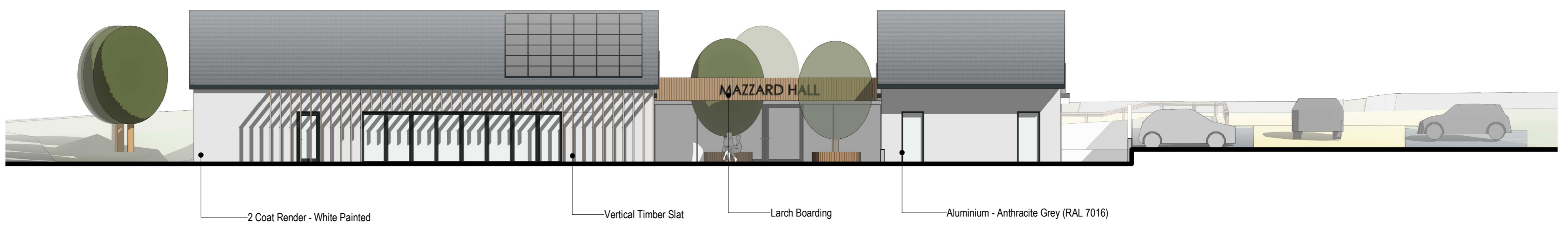
We are working closely with the Millennium Green Trustees to ensure that both amenities will work in harmony and maximises the opportunity for all users.

A South facing aspect over the Millennium Green with the best potential for sustainable solar energy.

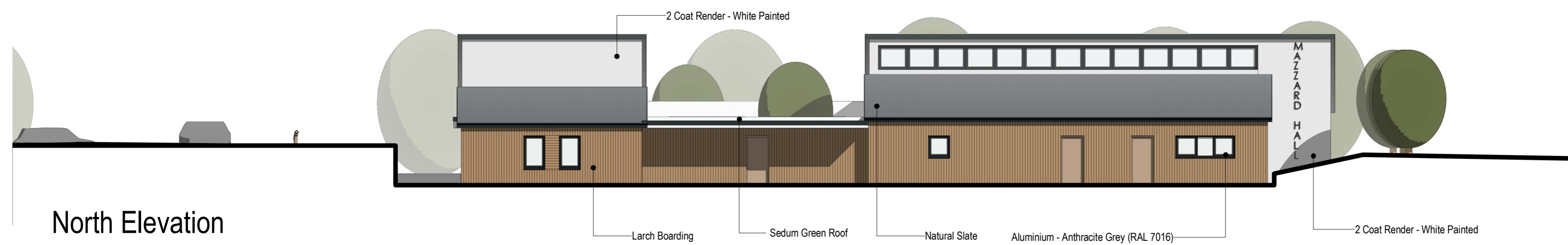
Proposed Site Plan



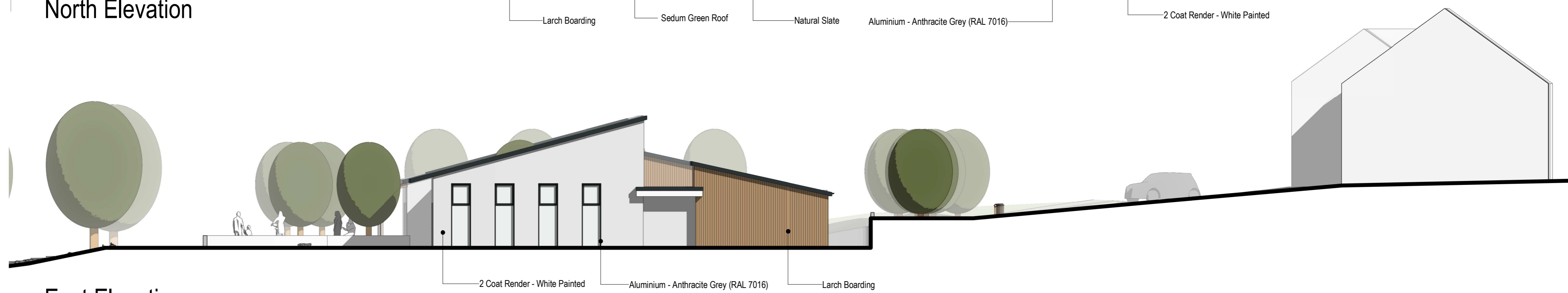
West Elevation



South Elevation



North Elevation



East Elevation