



LANDKEY MAZZARD HALL

DESIGN DEVELOPMENT

Plan Development

In 2020 Landkey Parish Council formed a Working Group to progress the viability of developing this site for a new community building. The group consists of Parish Councillors and volunteer local residents with relevant skills to drive the project in its initial stages. The group will oversee the planning, funding and construction of a future building. The Landkey Mazzard Hall Trust now exists as a Charitable Incorporated Organisation.

The Working Group has surveyed current local groups and other potential users of a new facility. It has also visited other new facilities in Devon to better understand the challenges and practical needs that a modern new building could incorporate.



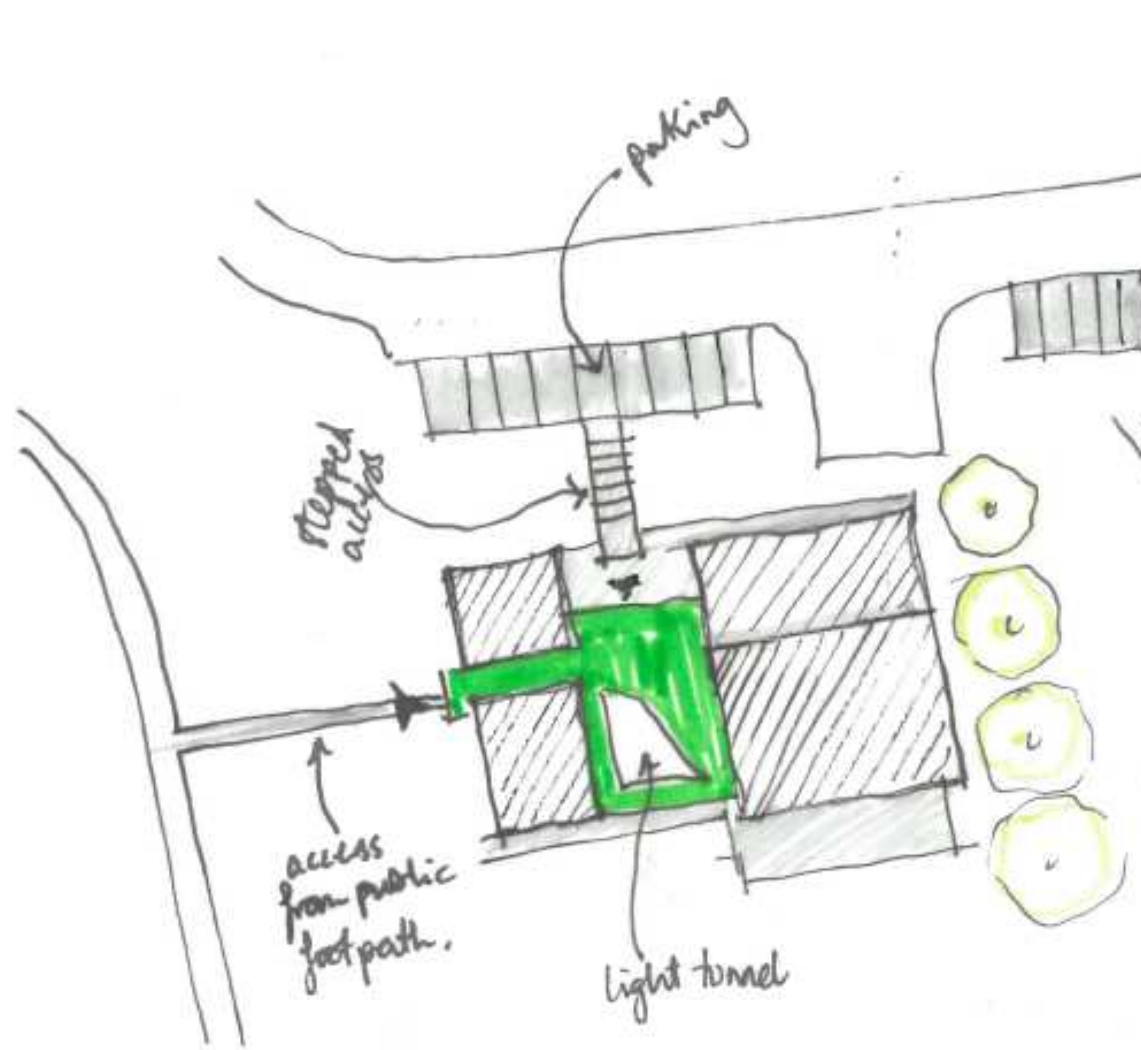
Barcombe Village Hall - The utilisation of differing materials to the roof pitches depicts the divide in functions.



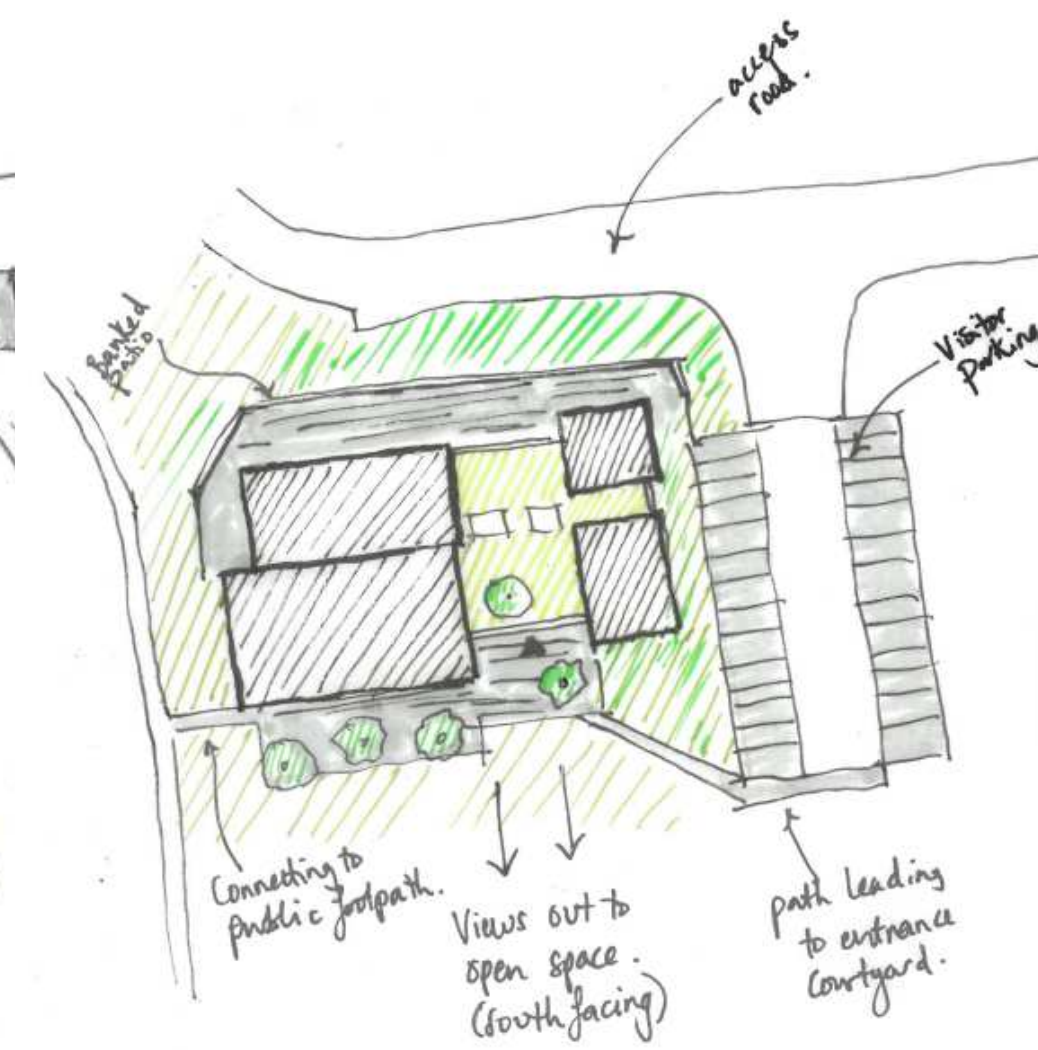
Stourpaine Village Hall - The use of two projecting offline and timber cladding, making this an economical



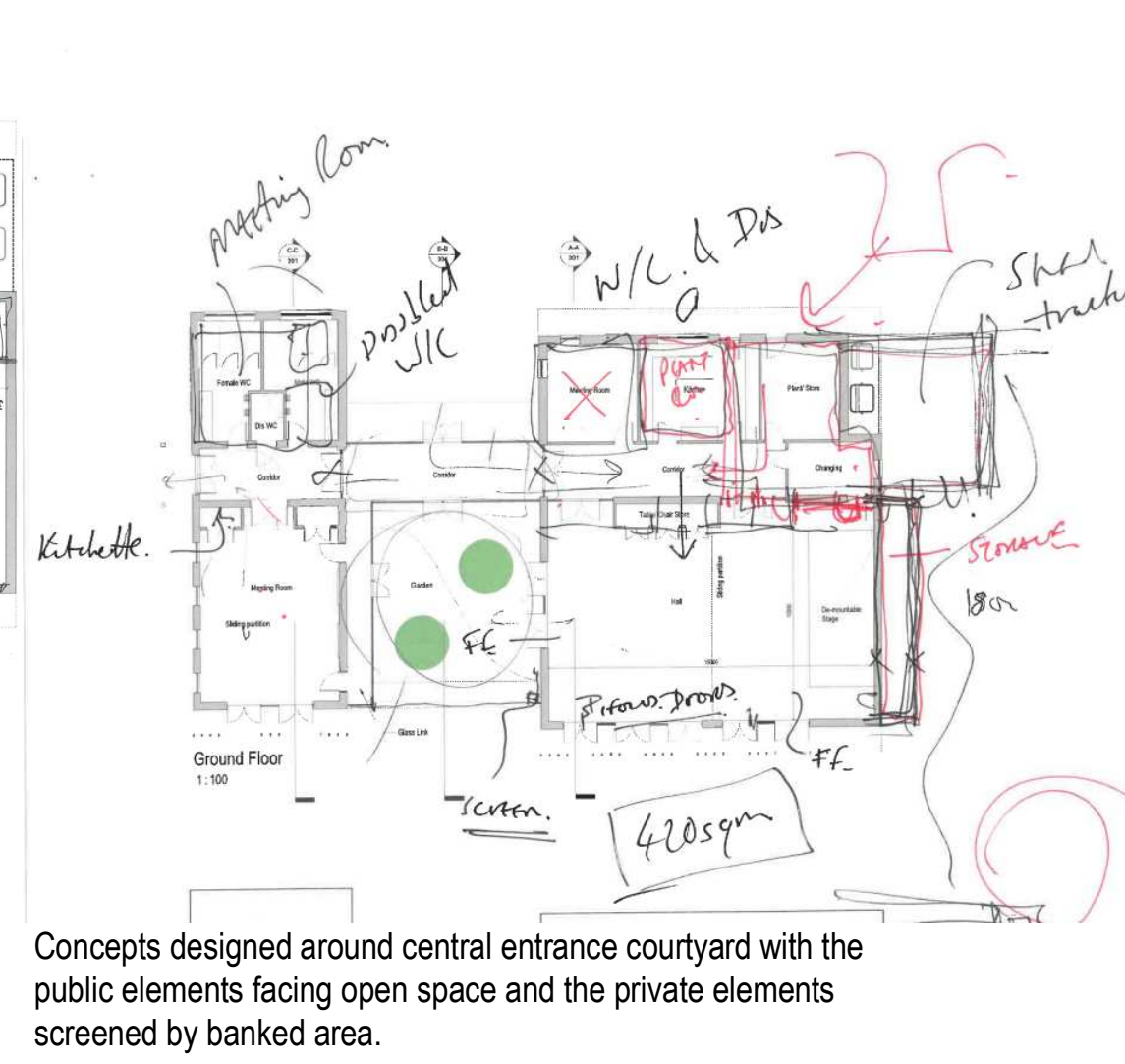
Wall House Courtyard - The pockets in the roof allow for trees to grow within the opening offering natural sunlight as an entrance feature.



First Iteration - Stepped Access, retaining the levels on site and access from public footpath



Revised Scheme - The scheme was flipped incorporating a banked patio area with additional visitor parking and utilised the views directed towards the public open space.



Concepts designed around central entrance courtyard with the public elements facing open space and the private elements screened by banked area.

Surrounding Site Materials

The site will be situated opposite Harford Way, a contemporary development scheme that evidences a material and landscape focus. The proposal will take queues from the existing development with the integration of timber cladding, natural slate roofs and white painted render.



uPVC - Anthracite Grey Windows

Red Brickwork



Natural Slate Roofing

Render - Painted White



Profiled Sheet Roofing

Timber Cladding

Examples of the materials from the homes built at Harford Way, opposite the proposed site.