



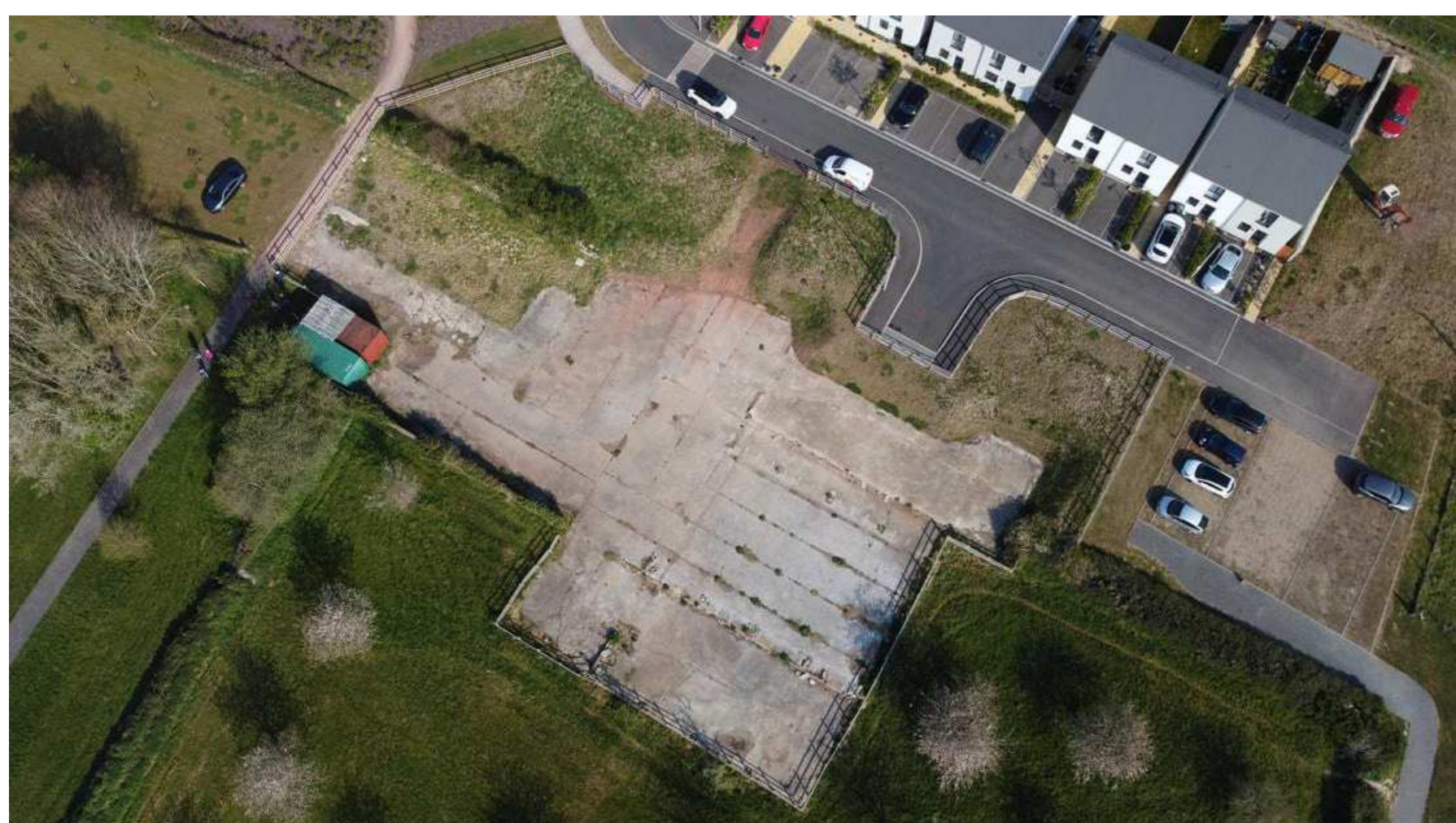
LANDKEY MAZZARD HALL

The Context

Why Is It Needed?

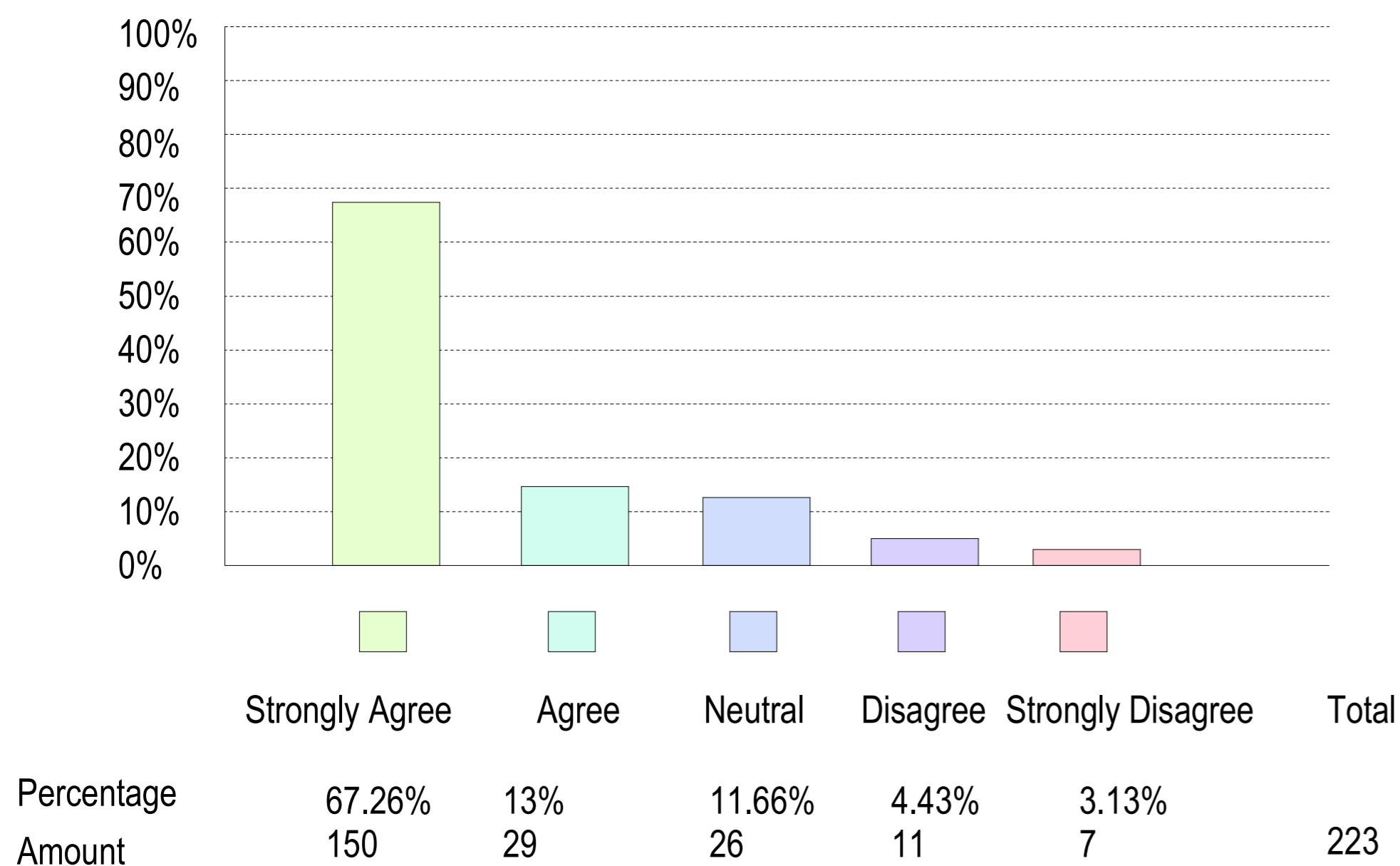
Over the last 50 years Landkey has grown significantly to become the largest rural village in North Devon. With a growing population (now over 2300) our community facilities do not match the scale of local need, and Landkey does not compare well in this respect with other smaller villages.

The need for a new community hall was identified as the 'top priority' for Landkey residents in a village survey as far back as 2001. It was subsequently included in the North Devon Local Plan as a key priority for the community of Landkey.

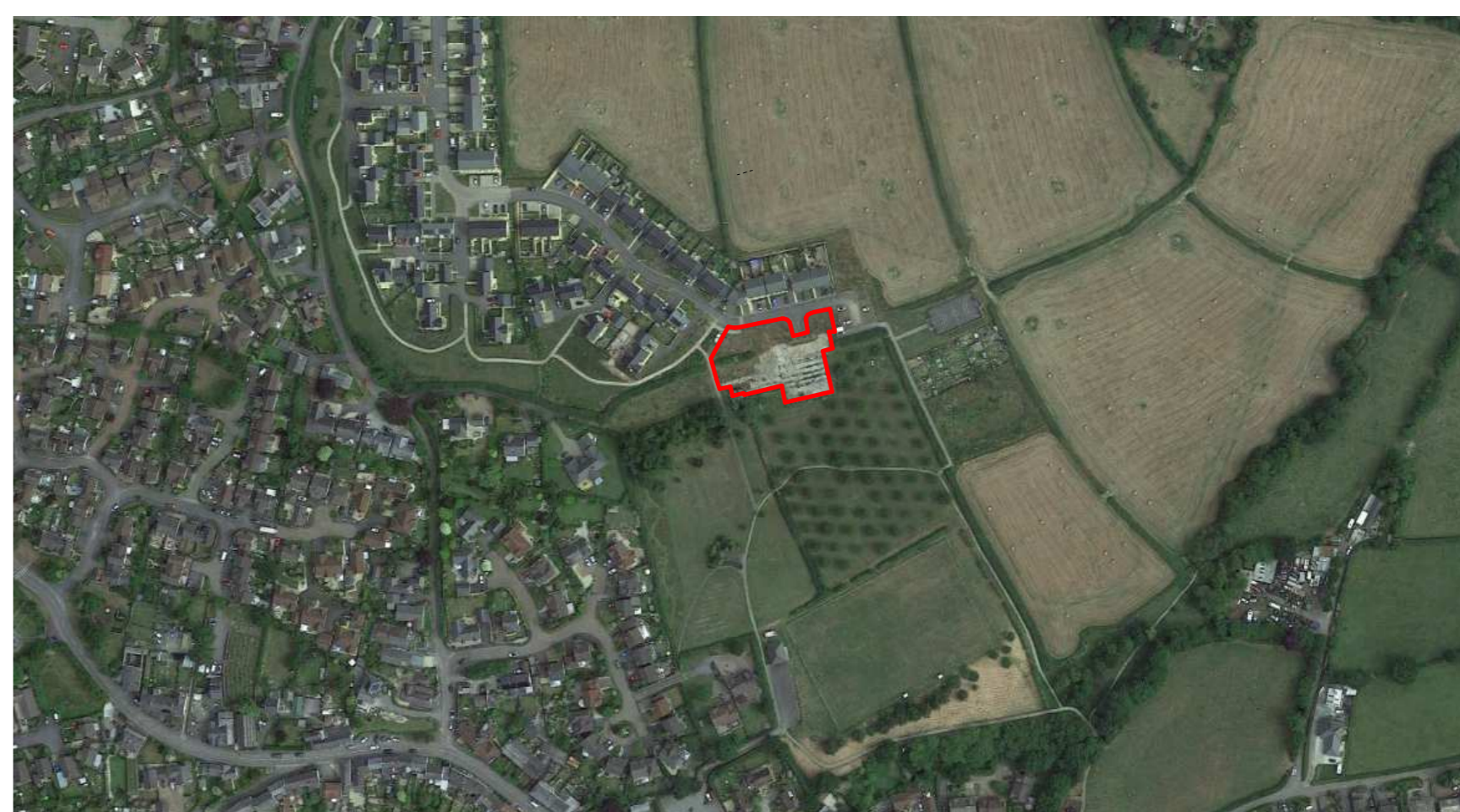


While we all very much value the current Village Hall, it was first built in 1919, is limited in its size and cannot accommodate the potential range and scale of uses or large social events. Similarly the Old School building is restricted in size and as an ageing Victorian structure which is cost-prohibitive to repair and maintain in the longer term. In 2022 a village-wide survey of potential users of a new hall was carried out and the outcomes shared at a community engagement meeting

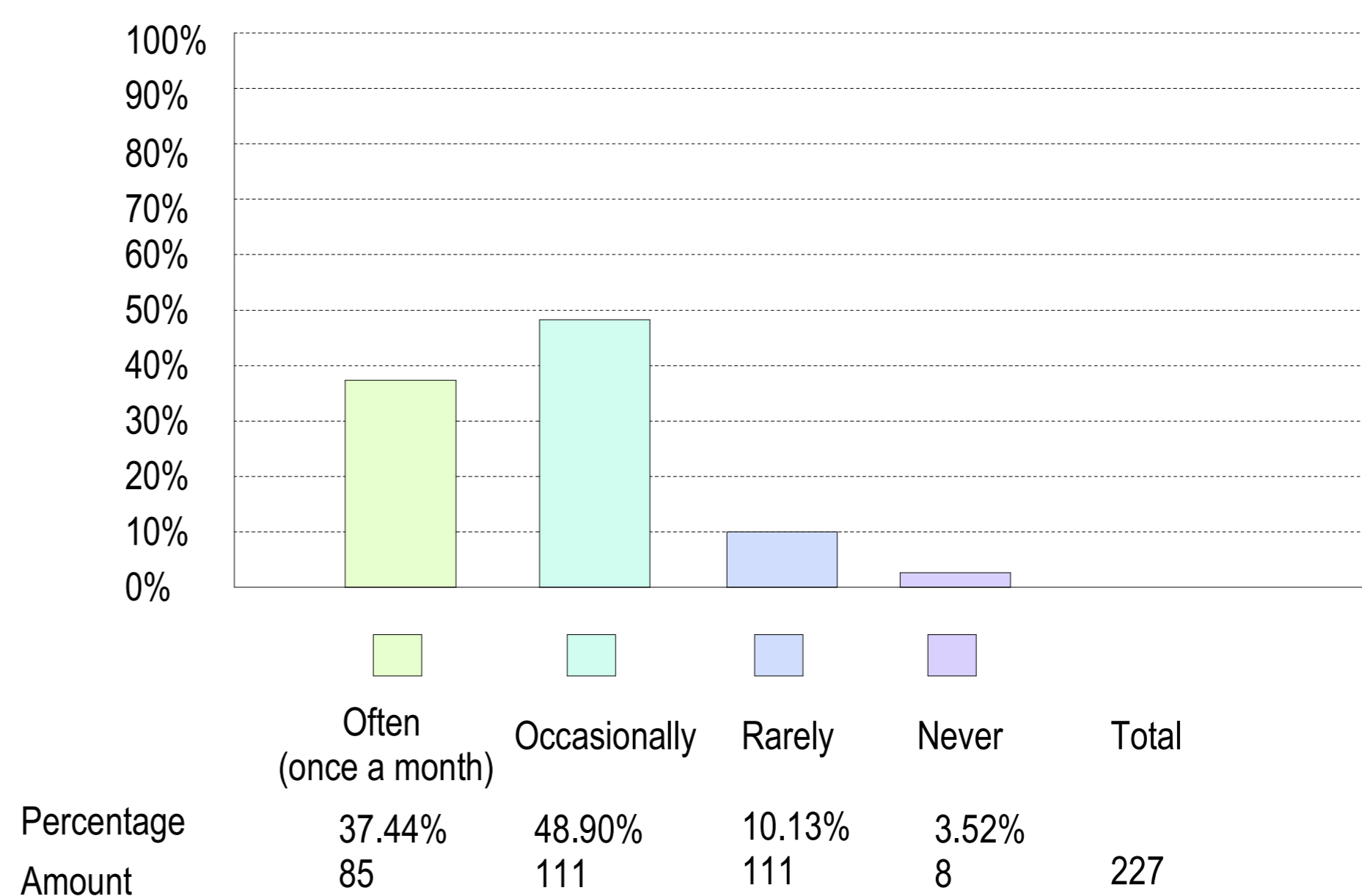
Is there a need for a new, modern community building for Landkey?



Site Context



How frequently do you anticipate you (or your family) would be likely use a new, larger community building with a broader range of activities in Landkey once it is built.



Presuming you will use the new community building, how are you most likely to travel there?

